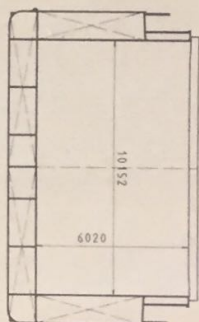


MAIN PARTICULARS

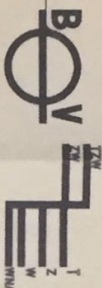
Length o.d. 88.80 m
 Length p.p. 84.95 m
 Breadth max. 12.60 m
 Breadth mid. 12.40 m
 Depth 5.30 m
 Draught 4.00 m
 Deadweight (T = 4.00 m) 2665 t
 Hold capacity (T = 4.00 m) 1905 t
 C.C. 130570
 C.F.T. 1905

PERMISSIBLE CARGO LOADING

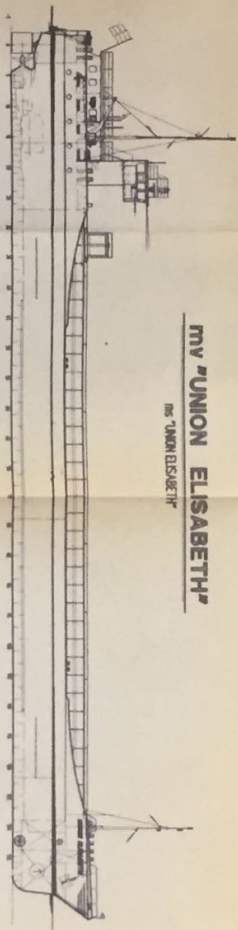
TANKTOP 12 t/m²
 HATCHCOVERS 1.6 t/m²



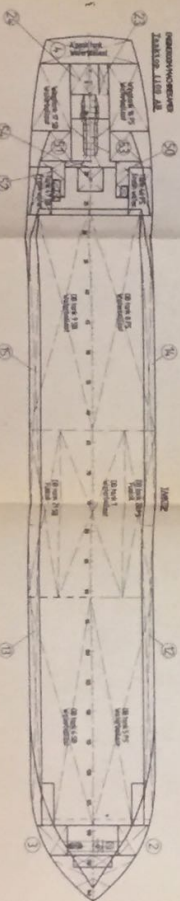
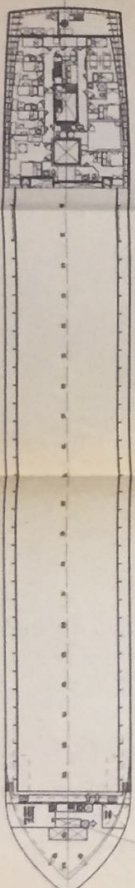
M.V. #10 UNION ELISABETH #10



MARK	DRAGHT	DEADWEIGHT
US KEEL	M	FRESH
	4.97	2714
	4.08	2665
	4.078	2750
	3.995	2665
	3.982	2580
	3.882	2629



M.V. "UNION ELISABETH"
 MS "UNION ELISABETH"



DRAGHT	Tonnas	Displacement		DEADWEIGHT	
		US KEEL	(tonnes)	(tonnes)	FRESH
40	W.2	3000	2700	2700	2600
38	W.1	3500	3400	2500	2400
36	W.0	3800	3700	2800	2700
34	W.0	4000	3900	3000	2900
32	W.0	4200	4100	3200	3100
30	W.0	4400	4300	3400	3300
28	W.0	4600	4500	3600	3500
26	W.0	4800	4700	3800	3700
24	W.0	5000	4900	4000	3900
22	W.0	5200	5100	4200	4100
20	W.0	5400	5300	4400	4300
18	W.0	5600	5500	4600	4500
16	W.0	5800	5700	4800	4700
14	W.0	6000	5900	5000	4900
12	W.0	6200	6100	5200	5100

Capacities of water-tanks, oil tanks and cargo spaces

Compartment	Frome	Capacity		WTG	LIG
		m ³	tonnes		
Waterballast-tanks S.G. = 1.025 t/m³					
FOREPEAK (B)	5A - FORE	65.42	66.770	3.038	81.983
FOREPEAK (B) (D-3)	629 - 5A	64.798	65.718	3.645	78.644
AFTPEAK (A)	4A1 - 2	8.631	8.842	3.520	8.848
DECK TANK 1 (F5-S8)	6-6d	91.429	225.882	280.278	0.554
DECK TANK 2 (F5-S8)	6-6e	61.91	74.961	117.035	0.520
DECK TANK 3 (F5-S8)	6-6f	26.63	271.654	284.596	0.565
DECK TANK 4 (F5-S8)	6-6g	79.09	293.068	300.292	3.286
DECK TANK 5 (F5-S8)	6-6h	27.79	290.270	290.270	3.225
DECK TANK 6 (F5-S8)	6-6i	2.13	59.642	61.133	3.47
Total		430.790	1466.540		
Freshwater-tanks S.G. = 1.000 t/m³					
FRESHWATER TANK (F5-S8)	6-6+67	31.860	31.960	2.850	4.077
Total		462.650	1469.490		
Fuel oil S.G. = 0.85 t/m³					
DECK TANK (F5-S8)	6-6+2/3	63.91	67.006	90.954	0.559
DECK TANK (F5-S8)	6-6+2/3	52.5	64.897	64.894	79.950
DECK TANK (F5-S8)	6-6+2/3	2.7	2.7	2.7	2.804
DECK TANK (F5-S8)	6-6+2/3	2.9	9.944	84.54	3.800
Total		62.1	146.547	148.454	2.719
Engine room tanks S.G. = 0.91 t/m³					
DECK TANK (F5-S8)	6-6	4.63	4.632	4.868	12.086
DECK TANK (F5-S8)	6-6	5.9	5.9	6.591	9.527
DECK TANK (F5-S8)	6-6	2.1	2.1	2.252	1.466
DECK TANK (F5-S8)	6-6	4.03	4.03	4.363	11.748
DECK TANK (F5-S8)	6-6	1.203	1.203	1.283	0.971
Total		17.896	17.927	19.367	26.808
Sewage tank S.G. = 1.000 t/m³					
SEWAGE TANK (S)	6-6	11.71	11.71	0.505	9.069
Total		11.71	11.71	0.505	9.069
Capacity					
Compartment	Frome	m ³	tonnes	WTG	LIG
Frue					
News					
HD.0.1	27 - 69	3677	3656.0	4.388	46.373
HD.0.2	27 - 117.5	3329	3329.0	4.311	35.850
HD.0.3	27 - 103.5	2816	2816.0	4.311	31.850
HD.0.4	27 - 171.5	8084	6568.5	4.311	31.850
HD.0.5	27 - 52.5	918	3227	4.311	21.850
HD.0.6	117.5 - 129	368	2295	4.311	14.988

SCHREIJSWERF PETERS B.V. Bouwerij: 440
 NIJMEGEN & REPARATIE VAN SCHAPEN
 2200 GA
 Tel. (026) 3153203 Fax. (026) 3251544

CAPACITY PLAN

Datum: 8-02-1997
 Schaal: 1:250
 Getekend: G.M. Verbeet
 Bevestiging: [Signature]

Formaat: A1
 RC-Dept
 V.S. O.N.M.
 2081 (N) G.M. Verbeet

Kunde: Peter de Waard
 2081 (N) G.M. Verbeet